

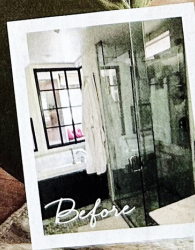
MAKEOVER

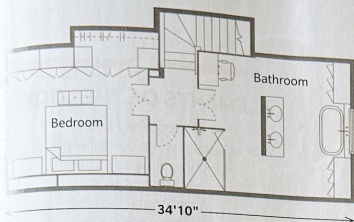
The ceiling was raised by three feet, and a new, larger window overlooking the back garden amps up natural light. **Sheers** by Clarke & Clarke, **drapes**, Kravet Canada.

SERENE *Sanctuary*

THESE TWO INVITING
PRINCIPAL SUITES WILL
INSPIRE YOU TO MAKE
OVER YOUR OWN.

Design GRIFFIN HOUGHTON
Photography DONNA GRIFFITH
Text WENDY JACOB





Floor Plan



Cosy & Chic

DESIGNER EMILY GRIFFIN pulled a switcheroo for her clients' renovation — and they loved it. The owners, a couple with teenaged children, had decided that they wanted to stay for as long as possible in their east end Toronto house. This third-floor renovation was the last piece in the puzzle, and that meant reimagining the floor plan. Emily (pictured above) removed a chimney and fireplace, swapped the bedroom with the bathroom, raised the ceiling, created a water closet on the landing and levelled out the floor (the incline meant the dresser drawers regularly slid open on a whim).

The rest of the house is very colourful, with lots of pattern and bold art, but this design brief was different. "My clients wanted utter serenity and a quiet palette," says Emily. "They yearned for a place to chill out, recharge and escape."

Instead of designing a traditional layout, she separated the sleeping and bathing areas to accommodate different sleep and "getting ready" schedules. "By flipping the floor plan,

the bedroom moved to the back of the house, where it's much quieter," says Emily. A bank of closets was added, with a set of doors opening to a small walk-in closet.

The feeling is zen, and everything is hidden away so it's always tidy. The clients say that, in the old bedroom, items were always piled on top of the dresser, chair and bench. They no longer have that problem. "There's even a drawer for my husband to toss his wallet and pocket contents into at the end of the day," says one owner.

Finally, a small rear window in the bedroom was replaced with a larger, three-panel version. "Now, we get glorious evening sunsets up here on the third floor," says the client. "It's like being in a tree house."

ABOVE: The vanity's Calacatta Monet marble counter was the jumping-off point for the overall palette. Unlacquered brass faucets pick up the gold tones in the marble. **Scances**, Lightmaker Studio; **marble**, Marble Trend.

TOP RIGHT: A twisty pendant hovers over a sculptural tub. Angled walls meant that a big part of the budget had to go to custom millwork to create storage. **Pendant**, Lumens; **tub** by Maax, Taps Bath Centre.

SEE SOURCE GUIDE



ELEMENTS OF THE LOOK

- Unlacquered brass
- Custom white oak millwork
- Richly coloured marble
 - Moroccan rugs
- Mixed-metal fixtures
- Woodsy wallpaper
- Floor tile in a herringbone pattern

LEFT: The makeup station makes it fun to get ready for a night out; Emily splurged on the three-way custom mirror with integrated lighting. **Wall colour,** Japanese Paper (6195-21), Sico.

BELOW: To save money, the toilet was kept in the same position and the new water closet was built around it. Emily had a picture frame made into a mirror. **Wallpaper** by Lewis & Wood, Kravet Canada; **mirror frame,** Vintage Fine Objects.



ABOVE: The bed is dressed in green hues and coordinating pillows to tie in with the water closet wallpaper.

